

Engine 890 Duke 2022 2022

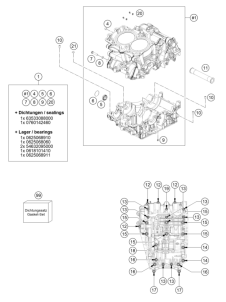
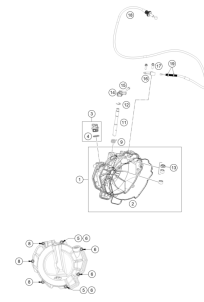
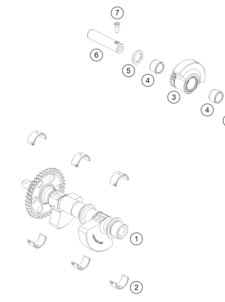
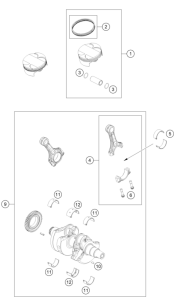
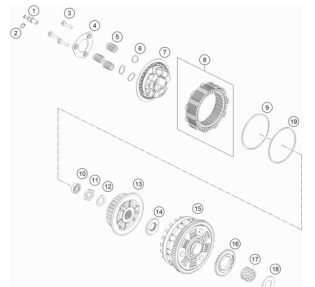
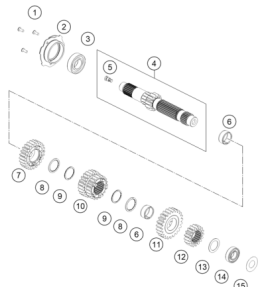
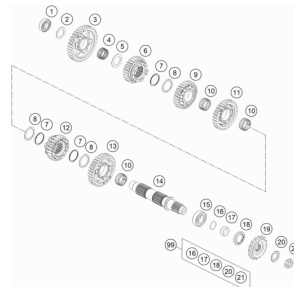
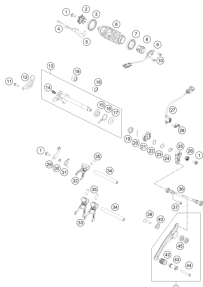
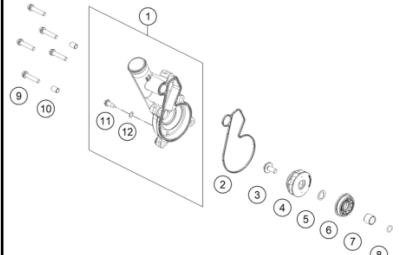
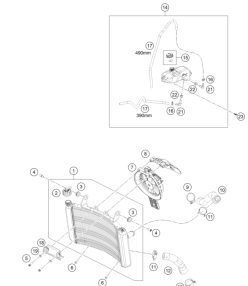
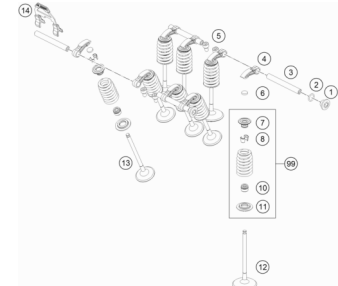
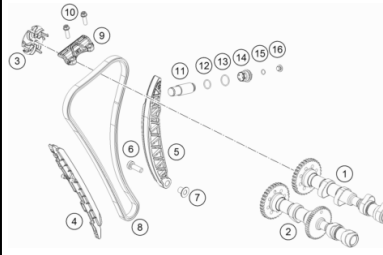
ART.-NR.: 088720VEN





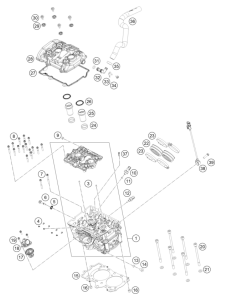
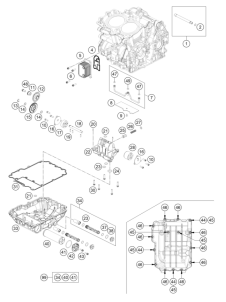
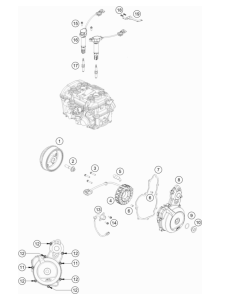
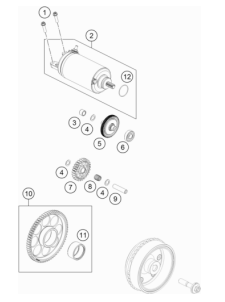
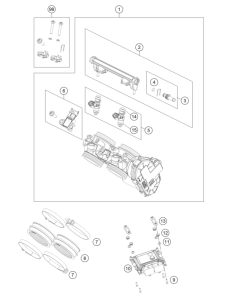
All information contained is without obligation. KTM Sportmotorcycle GmbH particularly reserves the right to modify any equipment, technical specifications, prices, colors, shapes, materials, services, service work, constructions, equipment and the like so as to adapt them to local conditions or to cancel any of the above items, all without previous announcement and without giving reasons. KTM may stop manufacturing certain models without previous notice. KTM shall not be held liable for any deviations of availability and/or ability to deliver, illustrations, descriptions, printing and/or other errors. The illustrated models partly contain extra equipment, which is not applied to standard models.

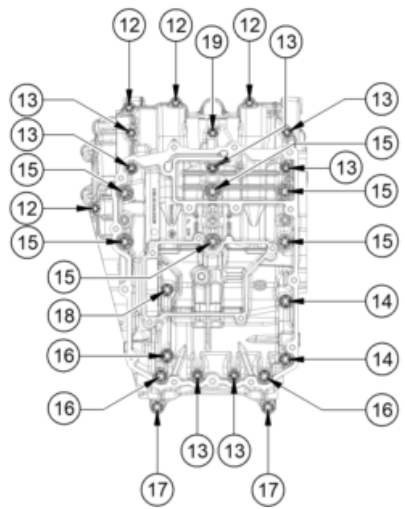
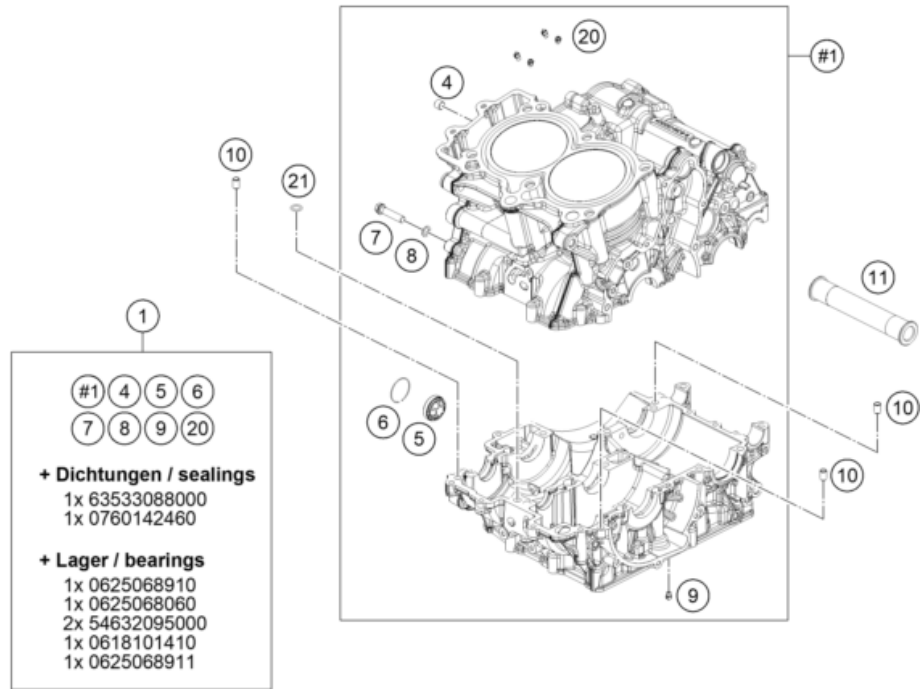
© by KTM Sportmotorcycle GmbH, Mattighofen AUSTRIA; All rights reserved; Reprint, also in extracts, with written allowance of KTM Sportmotorcycle GmbH, Mattighofen only.

| | | | |
|---|---|--|---|
| <p>ENGINE CASE</p>  <p>3</p> | <p>CLUTCH COVER</p>  <p>4</p> | <p>BALANCER SHAFT</p>  <p>5</p> | <p>CRANKSHAFT, PISTON</p>  <p>6</p> |
| <p>CLUTCH</p>  <p>7</p> | <p>TRANSMISSION I - MAIN SHAFT</p>  <p>8</p> | <p>TRANSMISSION II - COUNTERSHAFT</p>  <p>9</p> | <p>SHIFTING MECHANISM</p>  <p>10</p> |
| <p>WATER PUMP</p>  <p>12</p> | <p>COOLING SYSTEM</p>  <p>13</p> | <p>VALVE DRIVE</p>  <p>14</p> | <p>TIMING DRIVE</p>  <p>15</p> |

CONTENT

Engine 890 Duke 2022 2022

| | | | |
|--|---|--|---|
| <p>CYLINDER HEAD</p>  <p>16</p> | <p>LUBRICATING SYSTEM</p>  <p>17</p> | <p>IGNITION SYSTEM</p>  <p>19</p> | <p>ELECTRIC STARTER</p>  <p>20</p> |
| <p>THROTTLE BODY</p>  <p>21</p> | | | |
| | | | |



206363010

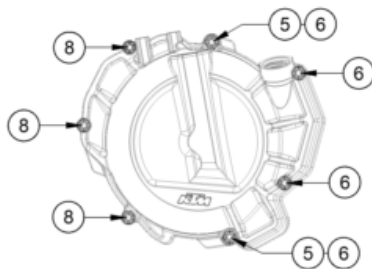
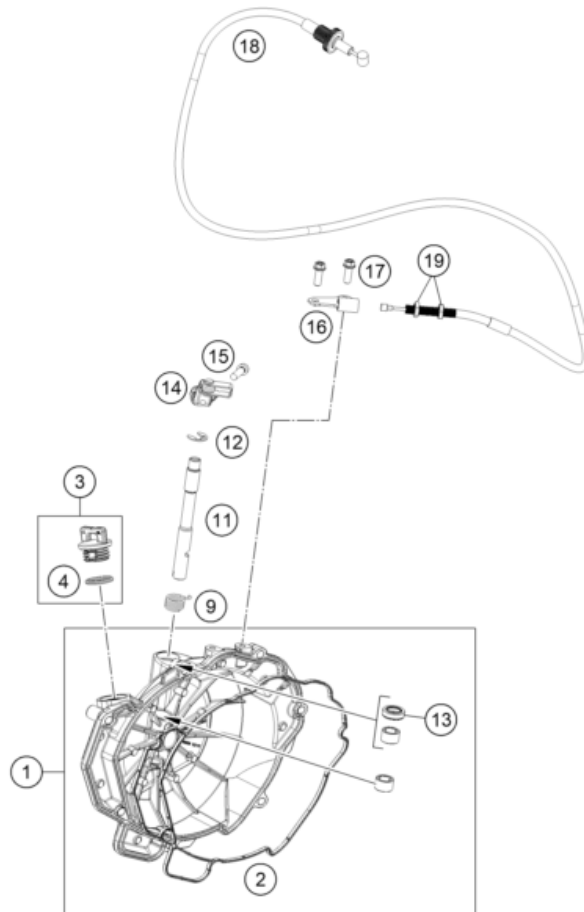
| POS | PARTNUMBER | PARTNAME | PIECE |
|-----|---------------|--|-------|
| 1 | 6363000014424 | Crankcase compl. | 1 |
| 4 | 0906100100 | pipe plug DIN 906 M10x1 | 1 |
| 5 | 59030019200 | OIL SIGHT GLASS | 1 |
| 6 | 61030019050 | CIRCLIP OIL LEVEL GLASS 03 | 1 |
| 7 | 0025080356 | HH collar screw M8x35 TX40 | 1 |
| 8 | 0603082131 | COPPER GASK.DIN7603- 8,2X13X1 | 1 |
| 9 | 60030063070 | oil jet 70 M5 | 1 |
| 10 | 59030023000 | dowel sleeve 6x8x11.5 | 3 |
| 11 | 63530010000 | housing socket | 1 |
| 12 | 00002506030U0 | Hex collar scr., M6x30, ISA 30 w. washer | 4 |
| 13 | 00002506060U0 | Hex collar scr., M6x60, ISA 30 w. washer | 7 |
| 14 | 0025080906 | HH collar screw M8x90 TX40 | 2 |
| 15 | 00002508090U0 | Hex collar scr., M8x90, ISA 40 w. washer | 6 |
| 16 | 0025080656 | HH collar screw M8x65 TX40 | 3 |
| 17 | 0025080556 | HH collar screw M8x55 TX40 | 2 |
| 18 | 0025080456 | HH collar screw M8x45 TX40 | 1 |
| 19 | 00002508065U0 | Hexagon collar nut M8x65 ISA 40 w.washer | 1 |
| 20 | 60030063050 | oil jet 50 M5 | 4 |
| 21 | 0377101018000 | O-ring 10x1.8 HNBR70 black | 1 |
| 99 | 63630099000 | Engine gasket kit 890 Duke 2020 | 1 |

53950

* NEW PART X ON DEMAND

CLUTCH COVER

Engine 890 Duke 2022 2022



| POS | PARTNUMBER | PARTNAME | PIECE |
|-----|---------------|-------------------------------|-------|
| 1 | 6353000134441 | Clutch cover cpl. | 1 |
| 2 | 63530025300 | Form ring, clutch cover | 1 |
| 3 | 58030020100 | oil plug cpl. M24x3 | 1 |
| 4 | 0770191015 | O-RING 19,00X3,00 NBR | 1 |
| 5 | 59030023000 | dowel sleeve 6x8x11.5 | 2 |
| 6 | 0025060356 | HH collar screw M6x35 TX30 | 4 |
| 8 | 0025060256 | HH collar screw M6x25 TX30 | 3 |
| 9 | 63532048003 | clutch release lever spring | 1 |
| 11 | 63532049000 | clutch release shaft | 1 |
| 12 | 0799090003 | retaining washer DIN 6799 - 9 | 1 |
| 13 | 0760122060 | Shaft seal ring 32x45x6.5 | 1 |
| 14 | 63532048233 | Release lever assembly | 1 |
| 15 | 014580060206S | Cyl. screw ISO 14580 M6x20 SS | 1 |
| 16 | 63532052100 | Cable retaining bracket | 1 |
| 17 | 0025060166S | HH collar screw M6x16 TX30 SL | 2 |
| 18 | 64102090000 | Clutch cable | 1 |
| 19 | 0934080006 | HEXAGON NUT DIN 934 M8 | 2 |

206353020

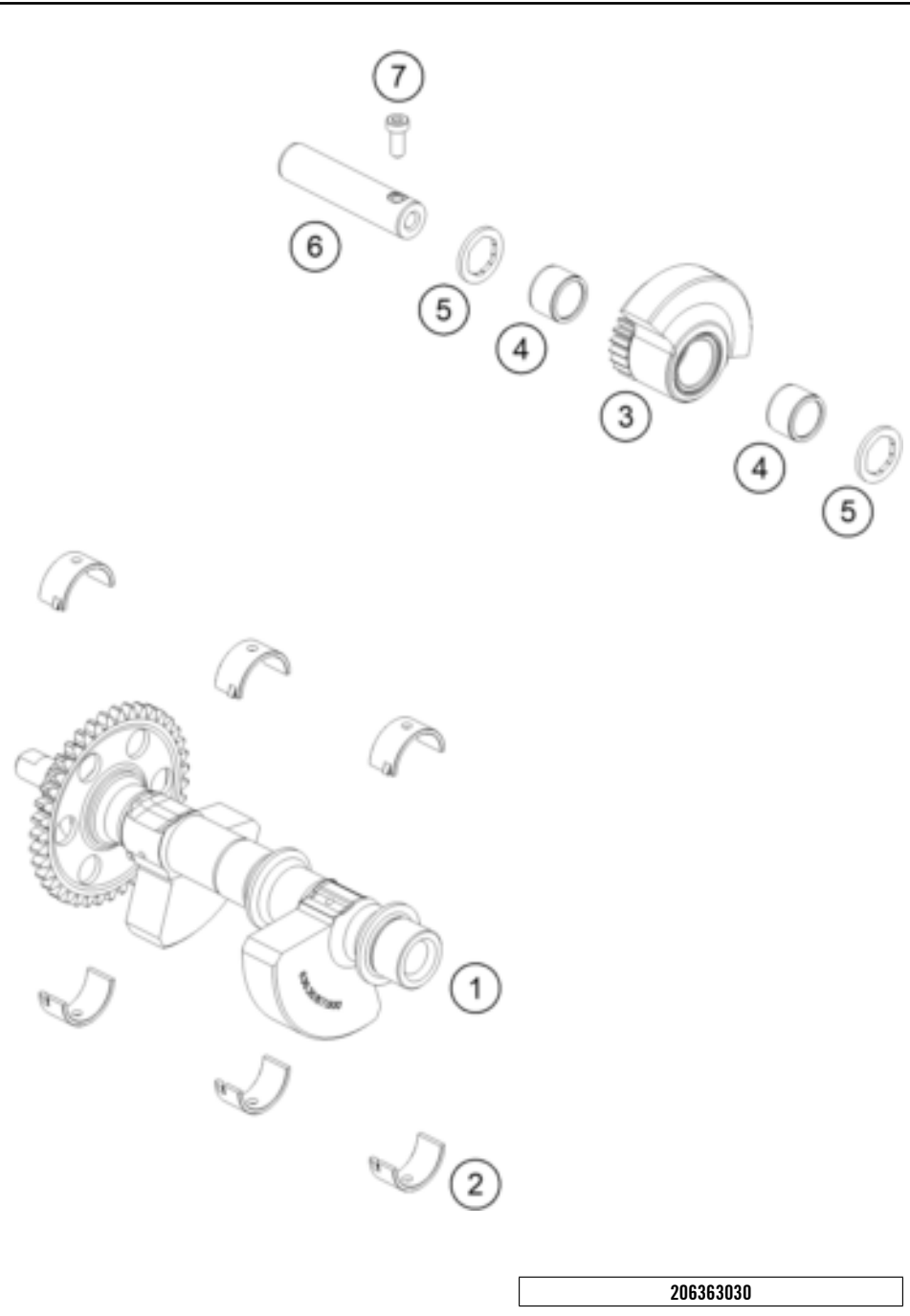
53298

* NEW PART

X ON DEMAND

BALANCER SHAFT

Engine 890 Duke 2022 2022



| POS | PARTNUMBER | PARTNAME | PIECE |
|-----|-------------|---|-------|
| 1 | 63630757044 | Balancer Shaft assy | 1 |
| 2 | 63530057050 | Bearing Shell 22/26/13 | 6 |
| 3 | 63630059000 | Balancer shaft compl. | 1 |
| 4 | 0405151913 | needle roller and cage assy. K 15x19x13 | 2 |
| 5 | 63530059060 | thrust washer 15.5/22.5/2 | 2 |
| 6 | 63530059150 | Bearing bolt | 1 |
| 7 | 0984050123S | CYLIND. SCR. DIN6912 M5X12 8.8 | 1 |

206363030

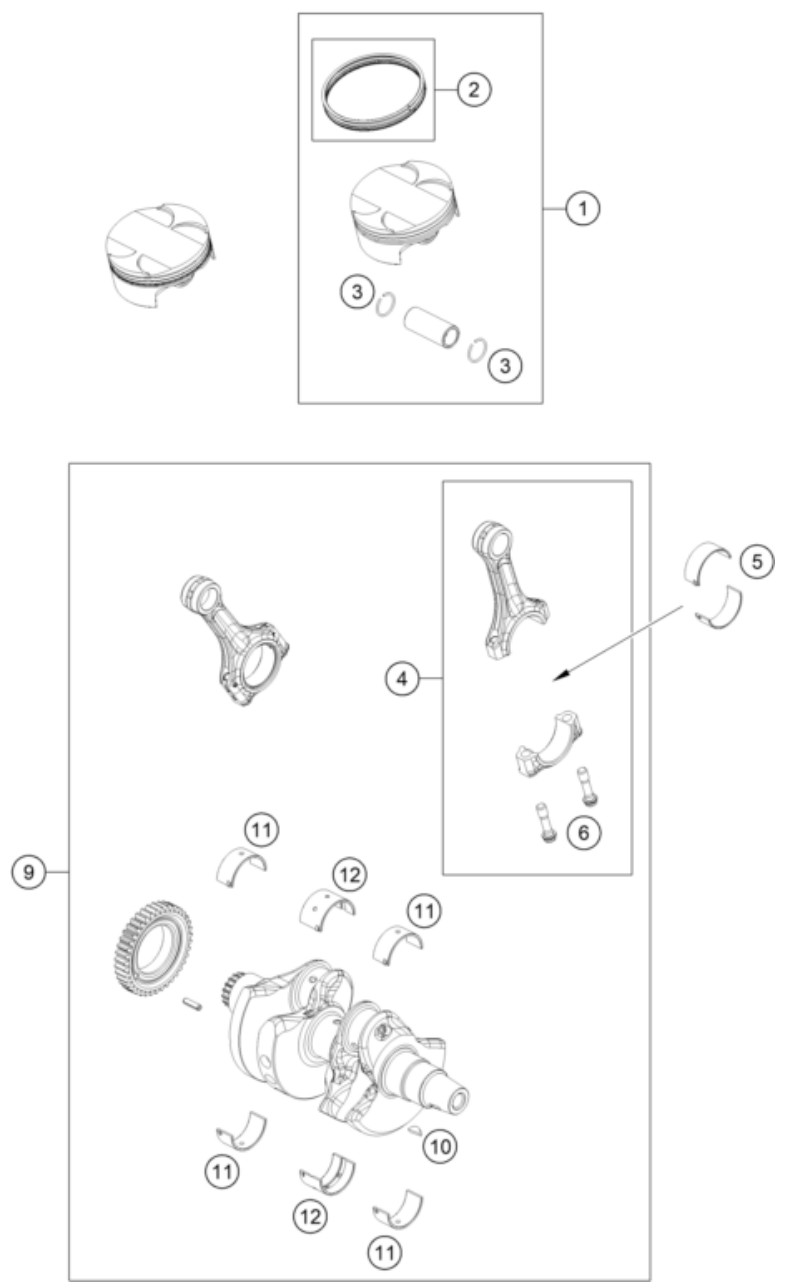
5776

* NEW PART

X ON DEMAND

CRANKSHAFT, PISTON

Engine 890 Duke 2022 2022



| POS | PARTNUMBER | PARTNAME | PIECE |
|-----|--------------|------------------------------------|-------|
| 1 | 63630007200 | Piston cmpl. 90.7 mm | 2 |
| 2 | 63630031144 | Piston ring kit | 2 |
| 3 | 63630074000 | circlip | 4 |
| 4 | 63630015200 | Connecting rod complete | 2 |
| 5 | 635300140001 | Bearing Shell, blue | x |
| 5 | 635300140002 | Bearing Shell, red | x |
| 6 | 63630013000 | Connecting rod screw, M8x0.75 | 4 |
| 9 | 63630018244 | Crankshaft cpl. Incl. Primary gear | 1 |
| 10 | 0888040050 | woodruff key DIN 6888 4x5x13 | 1 |
| 11 | 635300820001 | Main Bearing blue | x |
| 11 | 635300820002 | Main Bearing red | x |
| 12 | 635301820001 | Main Bearing blue | x |
| 12 | 635301820002 | Main Bearing red | x |

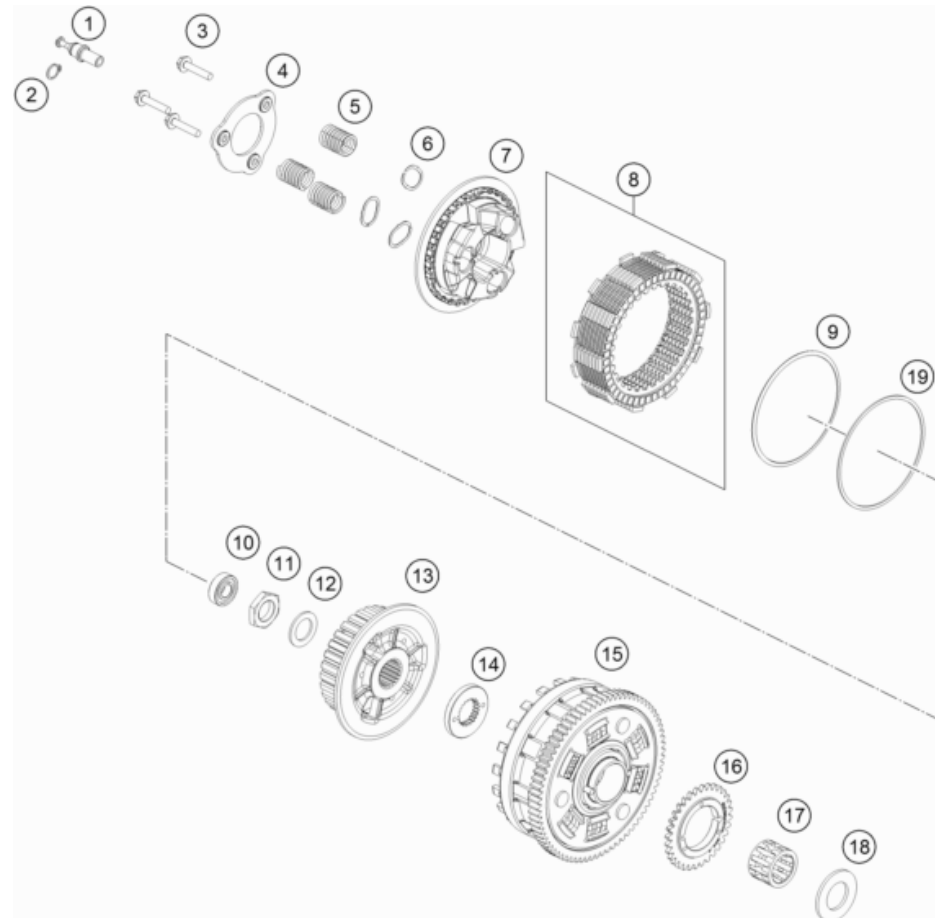
186353060

53955

* NEW PART X ON DEMAND

CLUTCH

Engine 890 Duke 2022 2022



| POS | PARTNUMBER | PARTNAME | PIECE |
|-----|---------------|-----------------------------|-------|
| 1 | 63532048104 | tension bolt | 1 |
| 2 | 0471120010 | retaining ring DIN 471 12x1 | 1 |
| 3 | 63532044000 | Collar screw M6x30 | 3 |
| 4 | 63532006000 | Arrestor Pressure Cap | 1 |
| 5 | 63532005000 | Clutch spring | 3 |
| 6 | 63532041000 | Clutch spring cover | 3 |
| 7 | 63532003000 | Pressure Plate | 1 |
| 8 | 63632011010 | Disc Pack | 1 |
| 9 | 63532034000 | Belleville Spring | 1 |
| 10 | 0625060017 | BALL BEARING 6001.2URS.C3 | 1 |
| 11 | 60036073150 | hex nut M20x1., H=6mm | 1 |
| 12 | 0252012103100 | Wedge lock washer HLS 20 | 1 |
| 13 | 63532002000 | center clutch | 1 |
| 14 | 63532021000 | Spline Washer | 1 |
| 15 | 63532001044 | Clutch Cage cpl. | 1 |
| 16 | 60038001232 | Oil pump gear 32th | 1 |
| 17 | 0405263525 | Needle bearing PK26x35x24.8 | 1 |
| 18 | 63532020000 | washer 26X47X3 | 1 |
| 19 | 63532035000 | Seat Judder Spring | 1 |

186353210

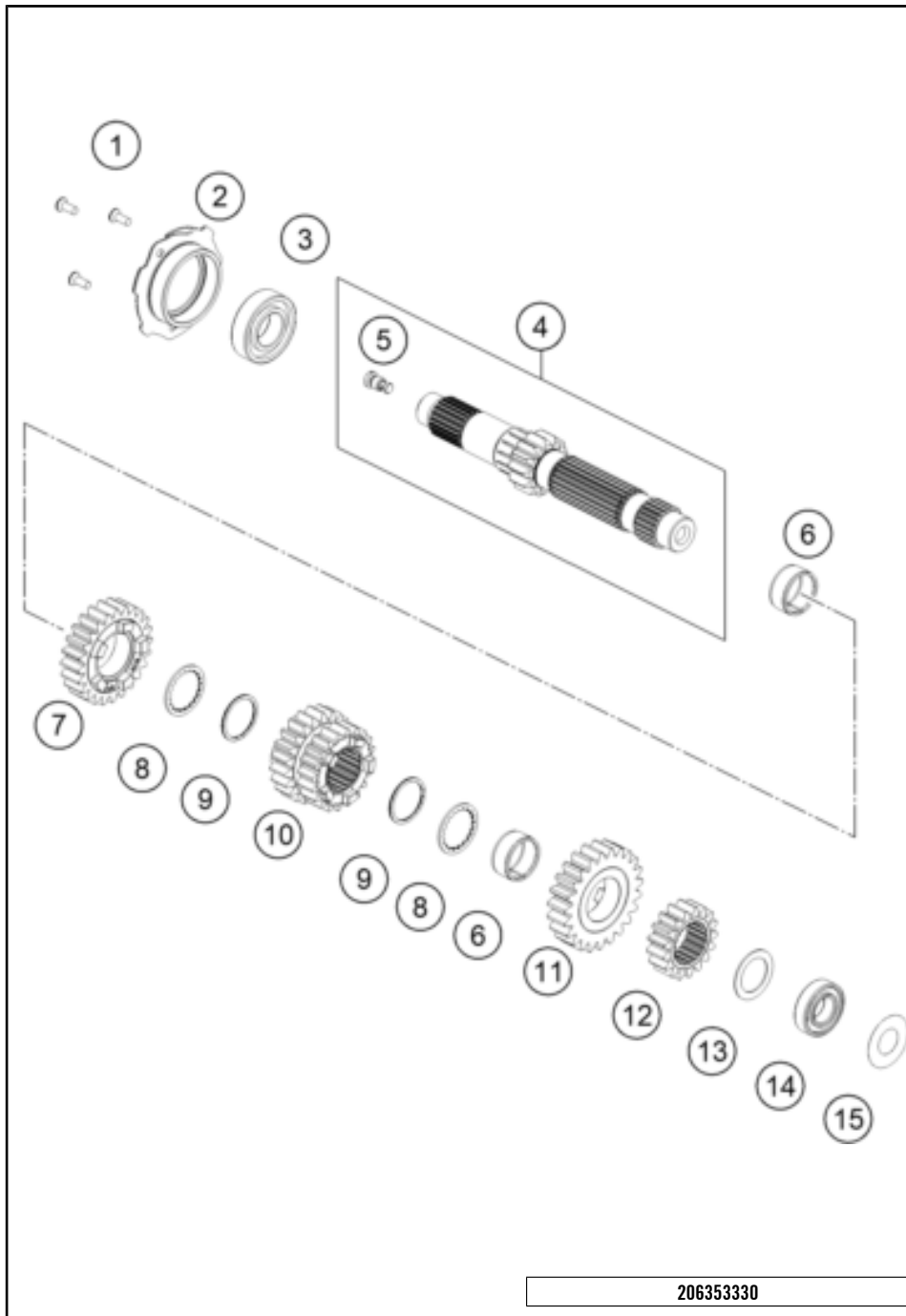
55621

* NEW PART

X ON DEMAND

TRANSMISSION I - MAIN SHAFT

Engine 890 Duke 2022 2022

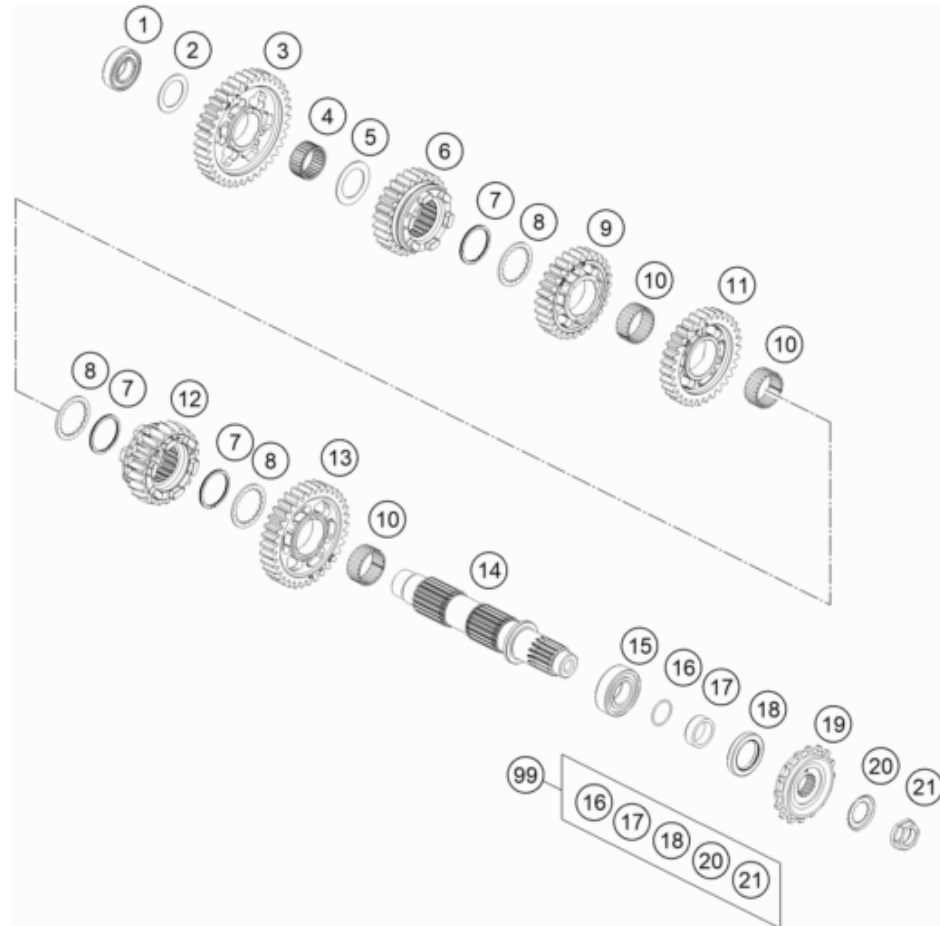


| POS | PARTNUMBER | PARTNAME | PIECE |
|-----|---------------|---------------------------------------|-------|
| 1 | 010642060166S | Hex screw ISO10642-M6x16 self-locking | 3 |
| 2 | 63530168000 | Bearing flange | 1 |
| 3 | 0006252801600 | Grooved ball bearing 62/28 C3 | 1 |
| 4 | 63633001044 | Main shaft preassembled | 1 |
| 5 | 63533001030 | reducing jet Ø0.3mm M8 | 1 |
| 6 | 0405242813G | NEEDLE BEAR.K 24X28X13 DIVIDED | 2 |
| 7 | 63633005000 | Idle gear 5th gear | 1 |
| 8 | 63533045000 | toothed washer | 2 |
| 9 | 0471026000 | circlip d26 | 2 |
| 10 | 63633003000 | Sliding gear 3rd/4th gear | 1 |
| 11 | 63633006000 | Idle gear 6th gear | 1 |
| 12 | 63533002000 | Solid gear 2. G | 1 |
| 13 | 63533032000 | stop disc 22.2/31.7/1 | 1 |
| 14 | 0625068910 | Ball bearing 6891 PH C3H | 1 |
| 15 | 63533088000 | sealing washer 22x44x0.2 | 1 |

206353330

57775

* NEW PART X ON DEMAND



| POS | PARTNUMBER | PARTNAME | PIECE |
|-----|---------------|------------------------------------|-------|
| 1 | 0625068910 | Ball bearing 6891 PH C3H | 1 |
| 2 | 63533032000 | stop disc 22.2/31.7/1 | 1 |
| 3 | 63533011000 | Idler Gear 1. G | 1 |
| 4 | 0405242813 | NEEDLE BEAR. K 24X28X13 TN | 1 |
| 5 | 63533034000 | stop disc 24.3/35.75/1 | 1 |
| 6 | 63633015000 | Sliding gear 5th gear | 1 |
| 7 | 0471029000 | TWISTED CIRCLIP D29 | 3 |
| 8 | 63533033000 | Stop Disc 27/36/1.5 | 3 |
| 9 | 63633014000 | Idle gear 4th gear | 1 |
| 10 | 0405263013G | needle bearing 26x30x13 splite | 3 |
| 11 | 63633013000 | Idle gear 3rd gear | 1 |
| 12 | 63633016000 | Sliding gear 6th gear | 1 |
| 13 | 63533012000 | Idler Gear 2. G | 1 |
| 14 | 63533010000 | Output shaft | 1 |
| 15 | 49030023000 | cylindrical roller bearing NJ205 | 1 |
| 16 | 0770020220 | O-RING 25,12X1,78 NBR70 | 1 |
| 17 | 63533030011 | Wear bushing, sprocket 11 mm | 1 |
| 18 | 0760003247000 | Shaft seal ring 32x47x7 AS-P FPM80 | 1 |
| 19 | 58033029115 | ENGINE SPROCKET 15 T DAMPED | x |
| 19 | 58033029116 | front sprocket 16 teeth damped | 1 |
| 19 | 58033029117 | ENGINE SPROCKET 17 T DAMPED | x |
| 20 | 51033031000 | locking plate | 1 |
| 21 | 58033132300 | Sprocket nut M20x1.5 | 1 |
| 99 | 00050000992 | Repair kit output shaft | x |

186353360

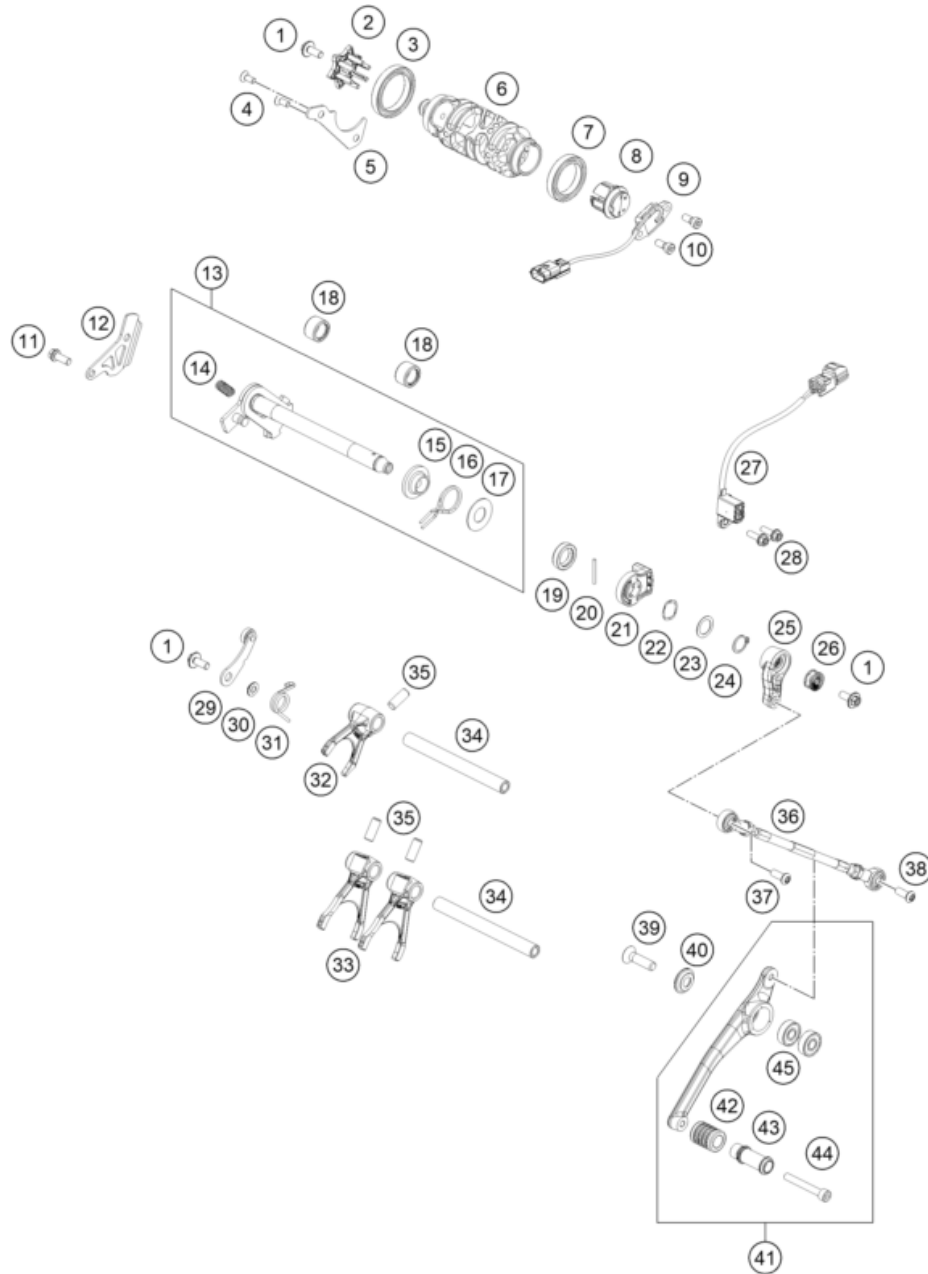
53983

* NEW PART

X ON DEMAND

SHIFTING MECHANISM

Engine 890 Duke 2022 2022



206353411

| POS | PARTNUMBER | PARTNAME | PIECE |
|-----|---------------|------------------------------------|-------|
| 1 | 0024060156S | HH collar screw M6x15 TX30 | 1 |
| 2 | 63534015000 | Shift locker cpl. | 1 |
| 3 | 0625068070 | deep groove ball bearing 6807 | 1 |
| 4 | 0019050121S | INT. TORX FLAT HEAD M5X12 T25 | 2 |
| 5 | 63534011200 | Bearing retaining bracket | 1 |
| 6 | 63534012001 | shift drum 6G | 1 |
| 7 | 0625068060 | deep groove ball bearing 6806 C3 | 1 |
| 8 | 79234012020 | magnet holder cpl. | 1 |
| 9 | 79211023000 | gear position sensor | 1 |
| 10 | 0984050123S | CYLIND. SCR. DIN6912 M5X12 8.8 | 2 |
| 11 | 0025060166S | HH collar screw M6x16 TX30 SL | 1 |
| 12 | 63533022000 | bearing retaining plate | 1 |
| 13 | 63534005033 | shift shaft cpl. | 1 |
| 14 | 56534013100 | TENSIONING SPRING 0,8MM | 1 |
| 15 | 54634020000 | SPRING GUIDE | 1 |
| 16 | 61234014000 | RETURNSPRING 2MM | 1 |
| 17 | 54634050000 | STOP DISK 14X30X1 | 1 |
| 18 | 54632095000 | needle sleeve HK 1412 14x20x12 | 2 |
| 19 | 0760142460 | radial shaft seal 14x24x6 B | 1 |
| 20 | 0007025241 | dowel pin DIN 7 A1 2.5m6x24 | 1 |
| 21 | 63534050000 | magnet holder | 1 |
| 22 | 63534050010 | wave spring Smalley SSB-0075-S17 | 1 |
| 23 | 0988142005 | Thrust washer DIN 988 14x20x0.5 | 1 |
| 24 | 0471140100 | retaining ring DIN 471 14x1 | 1 |
| 25 | 6413403000033 | Pull Rod | 1 |
| 26 | 50233041500 | PAIR NORDLOCK WASHER M6 | 1 |
| 27 | 63534051000 | Shift assistant sensor | 1 |
| 28 | 0025060166S | HH collar screw M6x16 TX30 SL | 2 |
| 29 | 63534024000 | detent arm cpl. | 1 |
| 30 | 63534052000 | step washer | 1 |
| 31 | 63634023000 | Detent arm spring | 1 |
| 32 | 63534002000 | shift fork 5-6 gear | 1 |
| 33 | 63534001100 | Shift fork | 2 |
| 34 | 75034019100 | shift fork shaft | 2 |
| 35 | 0402080200 | needle roller D8x20 | 3 |
| 36 | 63634036044 | Shift rod cpl. | 1 |
| 37 | 0738060205S | Oval head screw ISR M6x20-A2-70-MK | 1 |
| 38 | 0738060165S | Rnd. hd. scr. TX M6x16 A2-70 S | 1 |

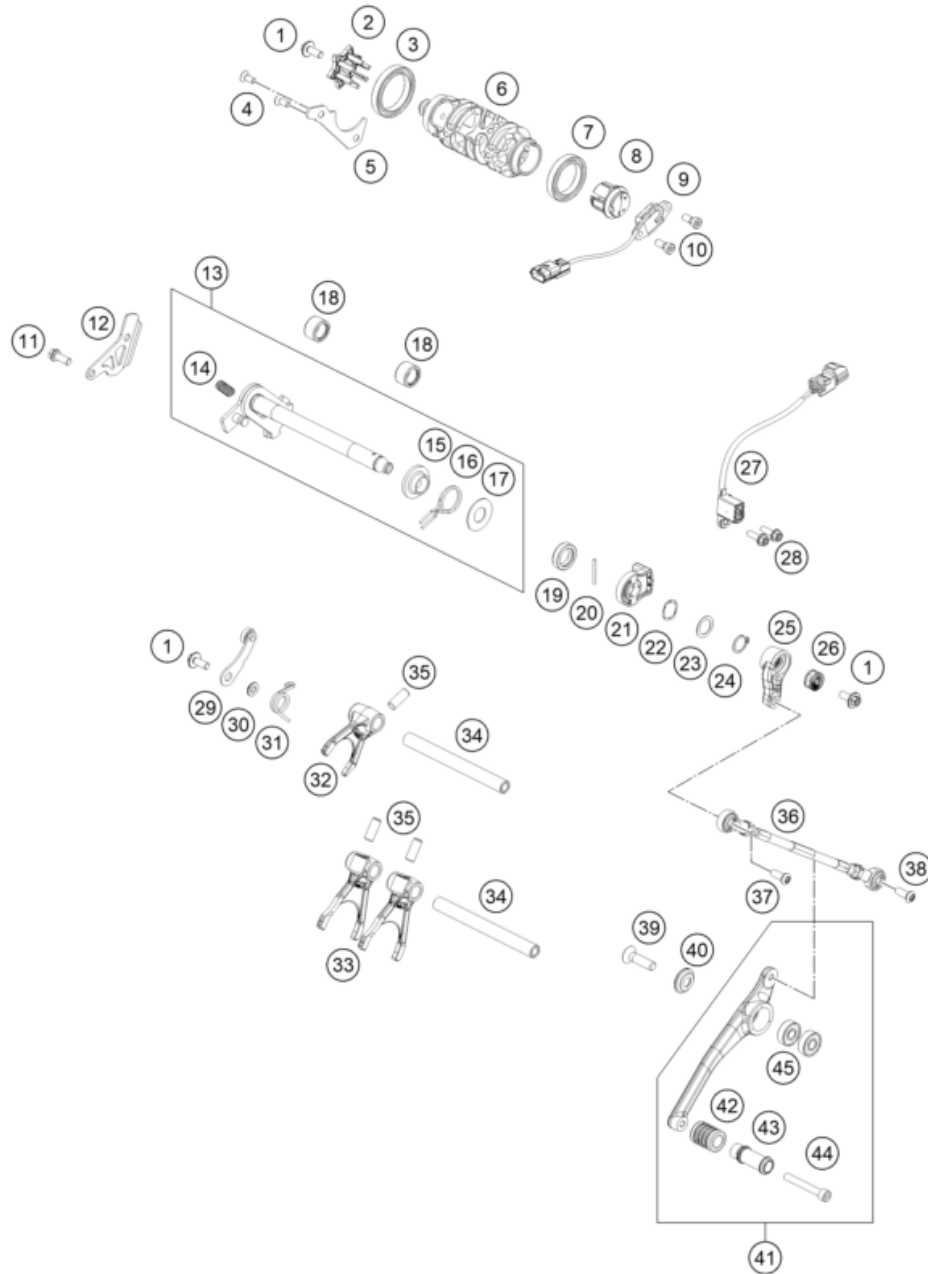
55618

* NEW PART

X ON DEMAND

SHIFTING MECHANISM

Engine 890 Duke 2022 2022



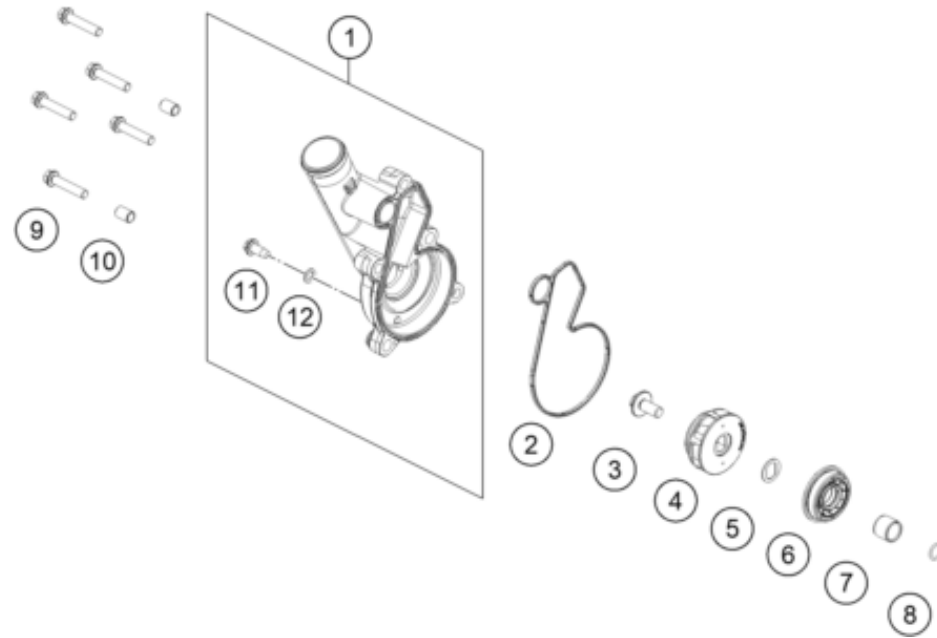
| POS | PARTNUMBER | PARTNAME | PIECE |
|-----|---------------|--------------------------------|-------|
| 39 | 0019080306S | COUNTER-SUNK SCREW ISA45 M8X30 | 1 |
| 40 | 64134031020 | Fasson Disc D=23x5 | 1 |
| 41 | 6413403104433 | Gear lever kpl. black | 1 |
| 42 | 61034035000 | RUBBER FOR SHIFT LEVER 05 | 1 |
| 43 | 69034032100 | GEAR LEVER | 1 |
| 44 | 0912060453 | AH SCREW DIN0912-M 6X45 | 1 |
| 45 | 0625006087 | GROOVED BALL BEAR. 608 2RS C3 | 2 |

206353411

55618

* NEW PART

X ON DEMAND



| POS | PARTNUMBER | PARTNAME | PIECE |
|-----|---------------|---------------------------------|-------|
| 1 | 6353505200041 | water pump cover | 1 |
| 2 | 63535053000 | water pump cover gasket | 1 |
| 3 | 0024060136S | HH Collar screw M6x13 TX30 SL | 1 |
| 4 | 63535055000 | water pump wheel cpl. | 1 |
| 5 | 60035055150 | double-d washer 16x1 SST | 1 |
| 6 | 0760153459 | radial shaft seal 34.5x15x9 Duo | 1 |
| 7 | 77236072020 | water pump wear bushing | 1 |
| 8 | 07700900151 | O-RING 9x1,5 V80 SH | 1 |
| 9 | 0025060306S | HH collar screw M6x30 TX30 | 5 |
| 10 | 59030023000 | dowel sleeve 6x8x11.5 | 2 |
| 11 | 60335061000 | Ejot Altracs Plus 60x14 | 1 |
| 12 | 0603061001 | CU-SEAL RING DIN7603-6X10X1 | 1 |

186353510

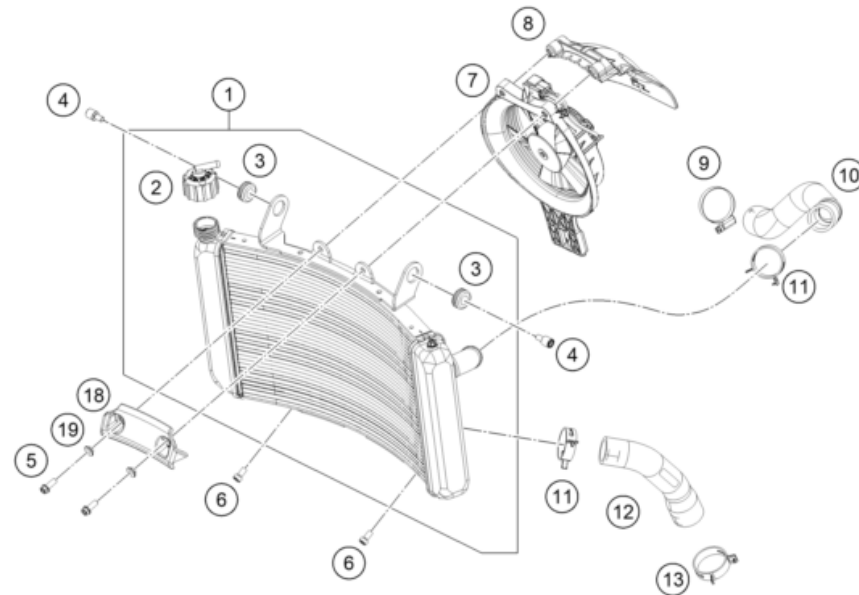
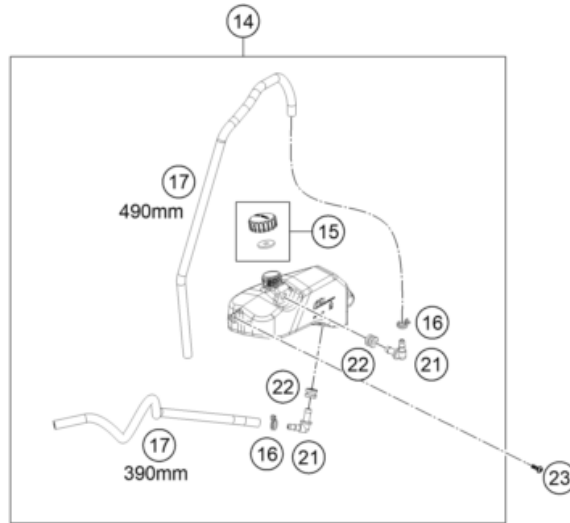
49615

* NEW PART

X ON DEMAND

COOLING SYSTEM

Engine 890 Duke 2022 2022



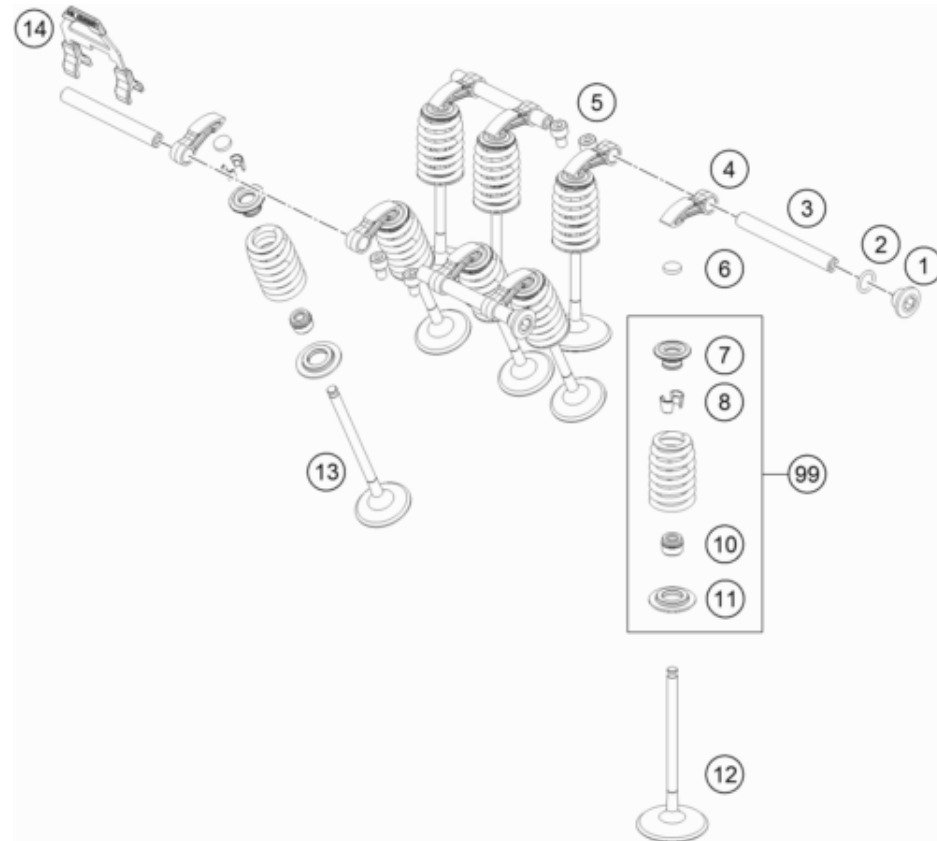
| POS | PARTNUMBER | PARTNAME | PIECE |
|-----|--------------|-------------------------------|-------|
| 1 | 63635010100 | Radiator | 1 |
| 2 | 62535009000 | RADIATOR CAP 1,4 BAR | 1 |
| 3 | 41001052000 | RUBBER SLEEVE D=12MM | 2 |
| 4 | 69035001000 | STUD BOLT M6 11X11 ISA45 | 2 |
| 5 | 0025060166S | HH collar screw M6x16 TX30 SL | 2 |
| 6 | 014580060126 | SHCS ISO 14580 M6x12 | 2 |
| 7 | 64135044033 | Fan cover cpl. | 1 |
| 8 | 63635042000 | Air deflector, radiator | 1 |
| 9 | 10001120000 | CLAMP 25-40 SGT 4 | 1 |
| 10 | 63635027100 | Pre-formed hose, radiator | 1 |
| 11 | 00049320121 | CLAMP STD DN32 | 2 |
| 12 | 63635026000 | Pre-formed hose, radiator | 1 |
| 13 | 00049380121 | Spring band clamp STD DN38 | 1 |
| 14 | 63635065033 | Reservoir, cpl. | 1 |
| 15 | 60335066044 | Latch, compens. tank cpl. | 1 |
| 16 | 58007117000 | YDNAC-CLAMP 10107 10MM | 2 |
| 17 | 60035067001 | HOSE 6X10 EPDM 03 | x |
| 18 | 64135032100 | Edge protection radiator | 1 |
| 19 | 69004060150 | bushing chain protection | 2 |
| 21 | 60035068000 | ANGLE CONNECTION EXPANS. TANK | 2 |
| 22 | 60035069000 | RUBBER GROMMET 6X9X13MM 04 | 2 |
| 23 | 0081040121 | EJOT Delta PT K40x12 | 1 |

206363530

57313

* NEW PART

X ON DEMAND



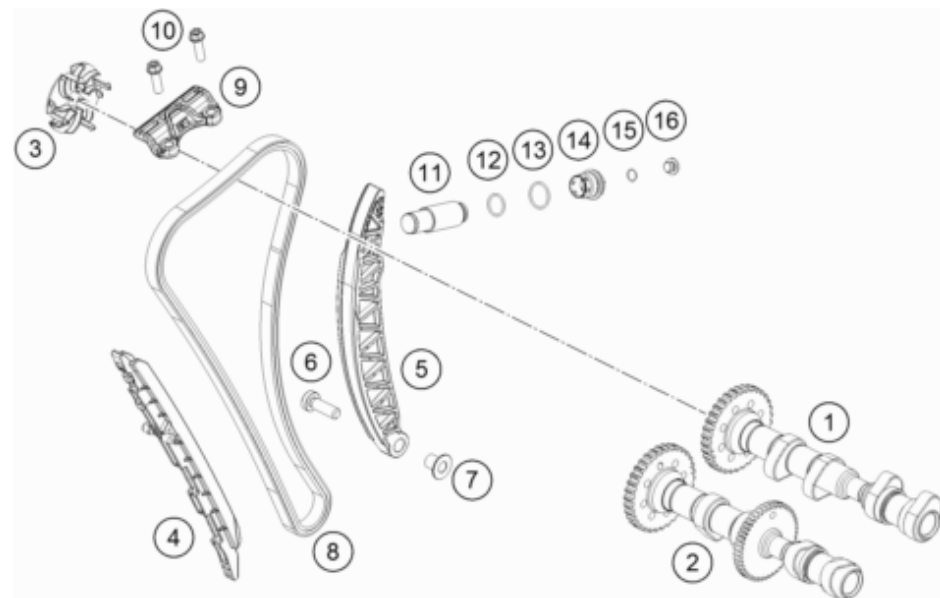
| POS | PARTNUMBER | PARTNAME | PIECE |
|-----|---------------|--------------------------------------|-------|
| 1 | 77236080100 | threaded plug | 2 |
| 2 | 07700900151 | O-RING 9x1,5 V80 SH | 2 |
| 3 | 63536056000 | cam follower shaft | 4 |
| 4 | 63536060000 | Cam follower | 8 |
| 5 | 014579050086S | Cap head screw, ISO 14579, M5x8-10.9 | 4 |
| 6 | 77036035172 | SHIM D=8,9/1,72 | x |
| 6 | 77036035176 | SHIM D=8,9/1,76 | x |
| 6 | 77036035180 | SHIM D=8,9/1,80 | x |
| 6 | 77036035184 | SHIM D=8,9/1,84 | x |
| 6 | 77036035188 | SHIM D=8,9/1,88 | x |
| 6 | 77036035192 | SHIM D=8,9/1,92 | x |
| 6 | 77036035196 | SHIM D=8,9/1,96 | x |
| 6 | 77036035200 | SHIM D=8,9/2,00 | x |
| 6 | 77036035204 | SHIM D=8,9/2,04 | x |
| 6 | 77036035208 | SHIM D=8,9/2,08 | x |
| 6 | 77036035212 | SHIM D=8,9/2,12 | x |
| 6 | 77036035216 | SHIM D=8,9/2,16 | x |
| 6 | 77036035220 | SHIM D=8,9/2,20 | x |
| 6 | 77036035224 | SHIM D=8,9/2,24 | x |
| 6 | 77036035228 | SHIM D=8,9/2,28 | x |
| 6 | 77036035232 | SHIM D=8,9/2,32 | x |
| 6 | 77036035236 | SHIM D=8,9/2,36 | x |
| 6 | 77036035240 | SHIM D=8,9/2,40 | x |
| 6 | 77036035244 | SHIM D=8,9/2,44 | x |
| 6 | 77036035248 | SHIM D=8,9/2,48 | x |
| 6 | 77036035252 | SHIM D=8,9/2,52 | x |
| 6 | 77036035256 | SHIM D=8,9/2,56 | x |
| 6 | 77036035260 | SHIM D=8,9/2,60 | x |
| 7 | 63536032100 | valve spring retainer | 8 |
| 8 | 77036033000 | valve collet | 16 |
| 10 | 90236027000 | valve stem seal | 8 |
| 11 | 63536036000 | Seat valve spring | 8 |
| 12 | 63636130000 | inlet valve | 4 |
| 13 | 63636131000 | exhaust valve | 4 |
| 14 | 63536056050 | cam follower clip | 1 |
| 99 | 63636028044 | VALVE SPRING KIT | x |

186353610

55631

* NEW PART

X ON DEMAND



| POS | PARTNUMBER | PARTNAME | PIECE |
|-----|-------------|----------------------------------|-------|
| 1 | 63636009044 | Camshaft inlet valve cmpl. | 1 |
| 2 | 63636010044 | Camshaft exhaust valve cmpl. | 1 |
| 3 | 63536080000 | bleeder centrifuge | 1 |
| 4 | 63536001000 | slide bars | 1 |
| 5 | 63636002000 | Slide rail | 1 |
| 6 | 0035080256S | ISA collar screw M8x25 ISA45 | 1 |
| 7 | 63536002150 | Collar bush Ø8xØ10x13.2 | 1 |
| 8 | 63636013000 | Timing chain | 1 |
| 9 | 63536005000 | slide bars, top cpl. | 1 |
| 10 | 0025060206S | HH collar screw M6x20 TX30 | 2 |
| 11 | 77036003100 | chain tension adjuster | 1 |
| 12 | 0770180020 | o-ring 18.00x2.00 NBR70 | 1 |
| 13 | 0770220020 | o-ring 22.00x2.00 NBR70 | 1 |
| 14 | 61236008200 | chain tension adjuster plug cpl. | 1 |
| 15 | 0770010010 | o-ring 10.00x1.00 NBR70 | 1 |
| 16 | 77236080100 | threaded plug | 1 |

186353620

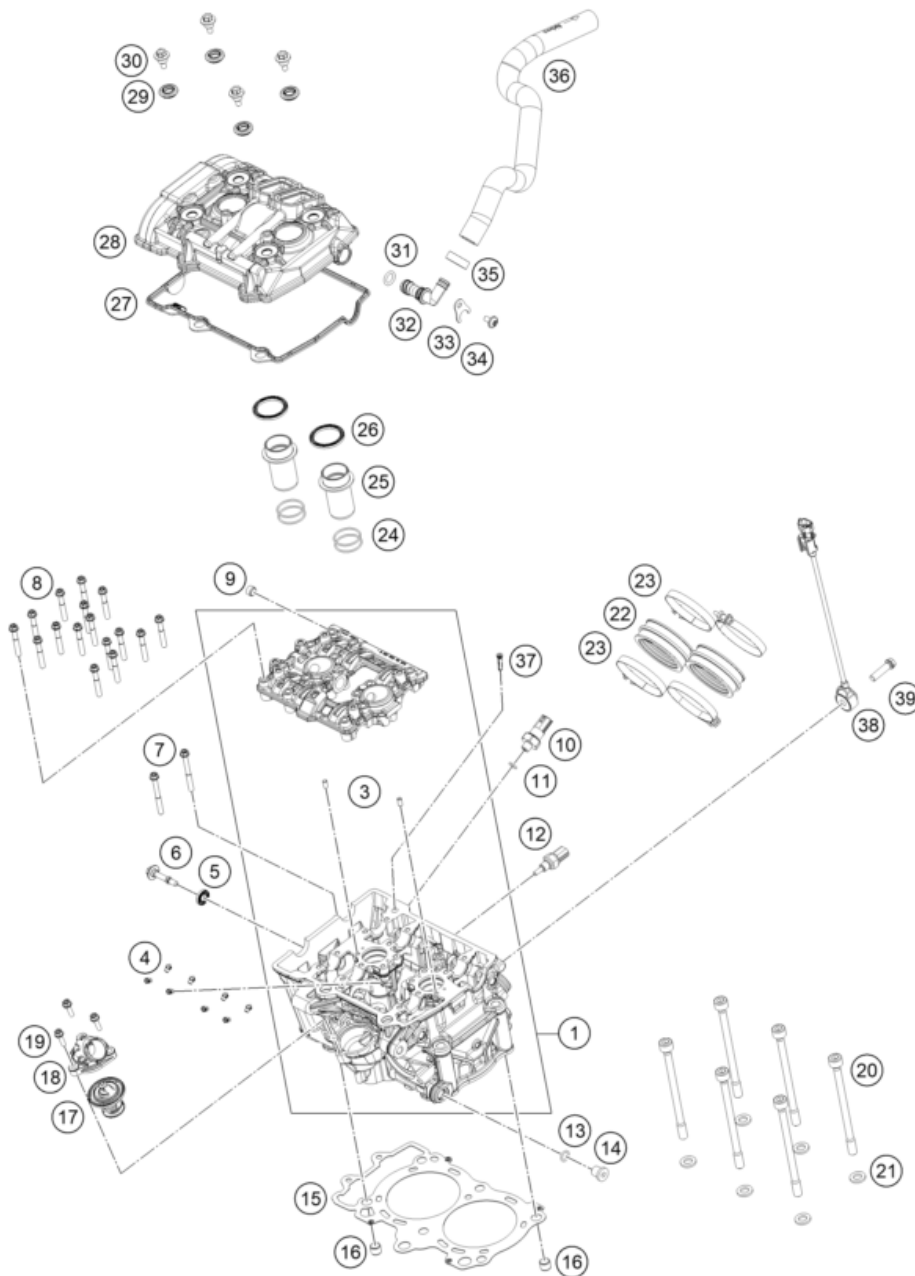
53963

* NEW PART

X ON DEMAND

CYLINDER HEAD

Engine 890 Duke 2022 2022



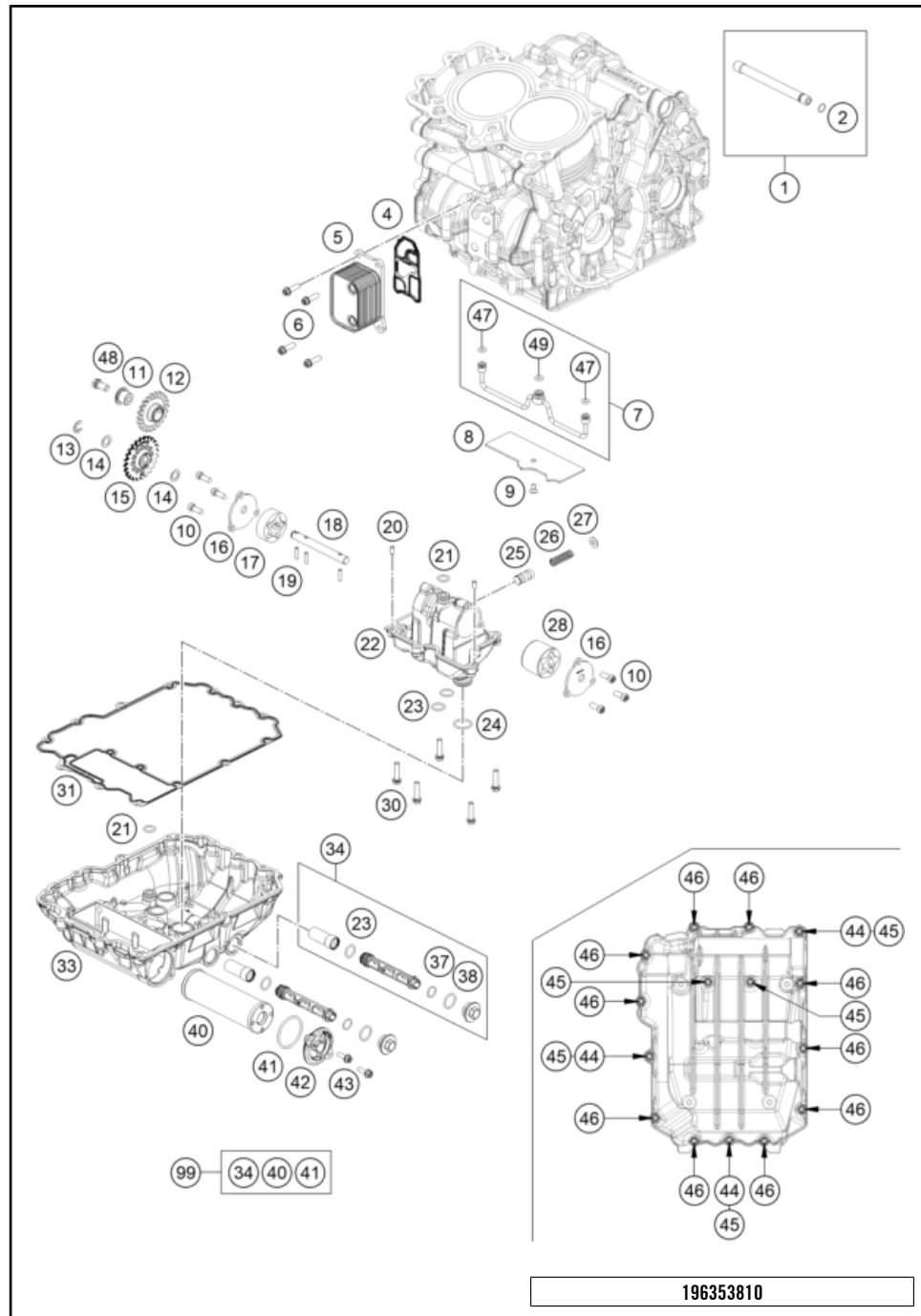
206363630

| POS | PARTNUMBER | PARTNAME | PIECE |
|-----|---------------|-----------------------------------|-------|
| 1 | 6363602000024 | Cylinder head cpl. | 1 |
| 3 | 0402050980 | needle roller DIN 5402 5x9.8 | 2 |
| 4 | 60030063050 | oil jet 50 M5 | 8 |
| 5 | 75036052010 | decoupling element | 1 |
| 6 | 75036055000 | valve mechanism cover screw | 1 |
| 7 | 0025060556 | HH collar screw M6x55 TX30 | 2 |
| 8 | 0025060405 | HH collar screw M6x40 ISA30 | 16 |
| 9 | 0906100100 | pipe plug DIN 906 M10x1 | 1 |
| 10 | 61238091100 | oil pressure switch "BITRON" | 1 |
| 11 | 07700900151 | O-RING 9x1,5 V80 SH | 1 |
| 12 | 79435047000 | water temperature sensor | 1 |
| 13 | 0770100020 | o-ring 10.00x2.00 silicone | 1 |
| 14 | 0908120153 | threaded plug DIN 908 M12x1.5 | 1 |
| 15 | 63630136000 | Cylinder head gasket | 1 |
| 16 | 58530014100 | dowl sleeve 10.2x12.5x10 | 2 |
| 17 | 63635017000 | Thermostat | 1 |
| 18 | 63535019100 | Water connection | 1 |
| 19 | 0025050166S | HH Collar Screw M5x16 ISA30 SS | 3 |
| 20 | 78630044000 | cylinder head bolt M10x1.25 L=138 | 6 |
| 21 | 77336089010 | washer 19x10.5x2.5 | 6 |
| 22 | 63536044000 | Intake Sleeve | 2 |
| 23 | 61236048000 | hose clamp Gemi 66 | 4 |
| 24 | 0770298178 | O-RING 29,87X1,78 VITON | 4 |
| 25 | 63536075000 | spark plug shaft insert | 2 |
| 26 | 61136075050 | spark plug shaft gasket | 2 |
| 27 | 63536053000 | Valve Cover Gasket | 1 |
| 28 | 6353605200033 | valve cover | 1 |
| 29 | 77036054150 | RUBBER GASKET FOR SCREW | 4 |
| 30 | 77336054150 | VALVE COVER SCREW | 4 |
| 31 | 0770012030 | O-RING 12,00X3,0 VITON 75 | 1 |
| 32 | 63536081000 | bleeder connector | 1 |
| 33 | 61236082150 | connecting angle retaining plate | 1 |
| 34 | 0080060123 | EJOT Altracs 60x12 TX30 | 1 |
| 35 | 00050198706 | VARIABLE ONE-EAR CLAMP 19,8MM | 1 |
| 36 | 63530087000 | Pre-formed hose engine breather | 1 |
| 37 | 61738016000 | Oil screen | 1 |
| 38 | 63641038000 | Knock control sensor | 1 |
| 39 | 0025080306 | HH collar screw M8x30 | 1 |

55687

* NEW PART

X ON DEMAND



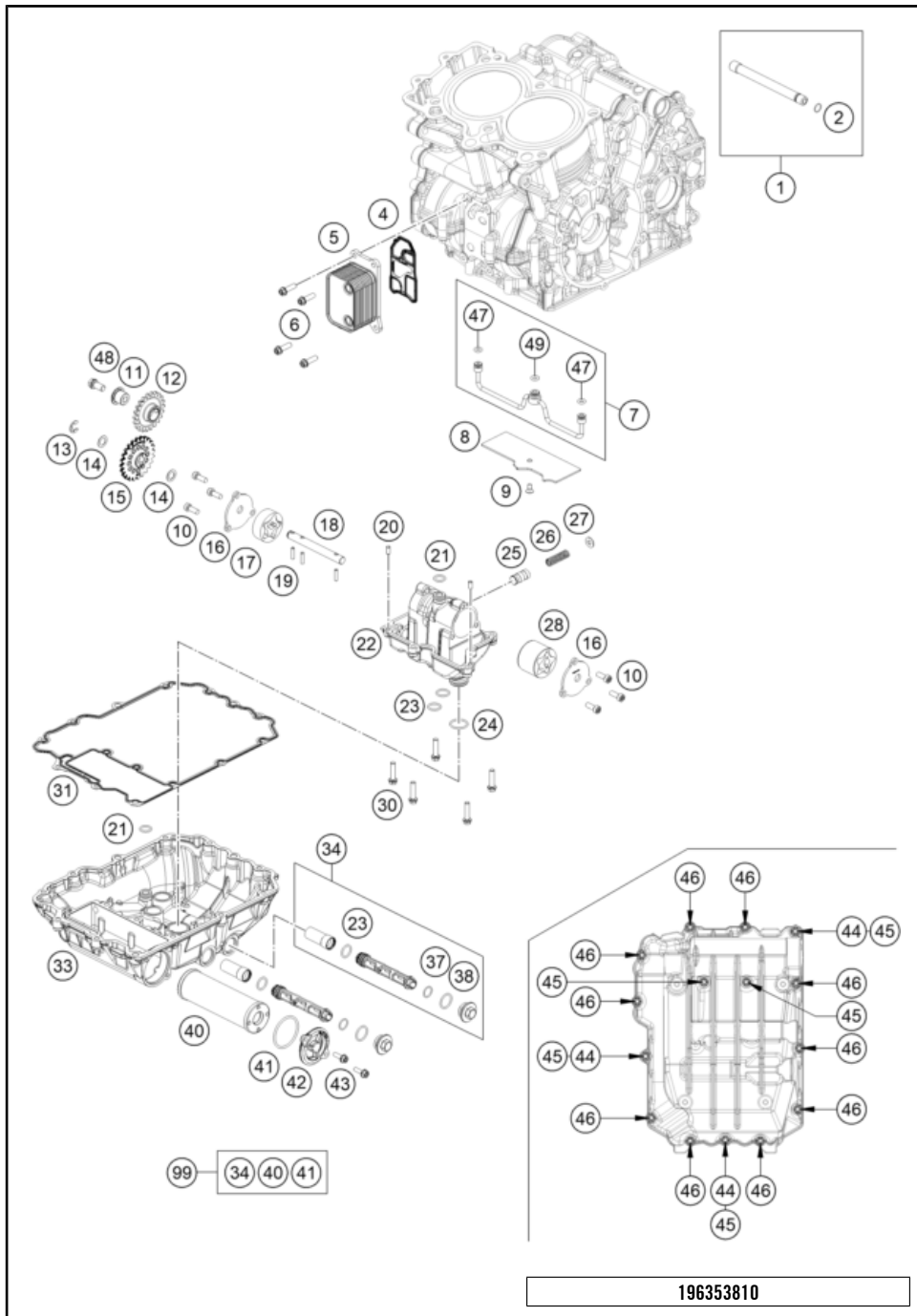
| POS | PARTNUMBER | PARTNAME | PIECE |
|-----|---------------|------------------------------------|-------|
| 1 | 63530065000 | Gearbox lubrication pipe compl. | 1 |
| 2 | 0770010010 | o-ring 10.00x1.00 NBR70 | 1 |
| 4 | 63538051000 | gasket with support sheet | 1 |
| 5 | 63638050000 | Oil radiator, compl. | 1 |
| 6 | 0025060206S | HH collar screw M6x20 TX30 | 4 |
| 7 | 63538035000 | oil line | 1 |
| 8 | 63530086010 | pressure plate | 1 |
| 9 | 0019050121S | INT. TORX FLAT HEAD M5X12 T25 | 1 |
| 10 | 014580060166S | SHCS ISO 14580 M6x16 SL | 6 |
| 11 | 63638003000 | Bearing bolt | 1 |
| 12 | 63538001022 | oil pump idler wheel 22 teeth cpl. | 1 |
| 13 | 07990800000 | retaining washer DIN 6799 - 8 | 1 |
| 14 | 60038007010 | washer 10x16x0.5 | 1 |
| 15 | 60038001224 | oil pump gear 24 teeth | 1 |
| 16 | 63538008050 | oil pump cover plate | 2 |
| 17 | 60038011100 | eaton pump set 14mm | 1 |
| 18 | 63538002000 | oil pump shaft | 1 |
| 19 | 0402041580 | needle roller NRB 4x15.8 G2 | 3 |
| 20 | 0402050980 | needle roller DIN 5402 5x9.8 | 2 |
| 21 | 0770120020 | O-RING 12,00X2,00 NBR 70 | 2 |
| 22 | 63538012000 | Oil Pumphousing | 1 |
| 23 | 0770140200 | O-RING 14,00X2,00 | 4 |
| 24 | 0770020020 | O-RING 20X2 VITON | 1 |
| 25 | 60038128000 | control piston | 1 |
| 26 | 63538026000 | oil pressure spring | 1 |
| 27 | 50337073000 | shim | 1 |
| 28 | 61238010100 | eaton pump set 30mm | 1 |
| 30 | 0025060256 | HH collar screw M6x25 TX30 | 5 |
| 31 | 63530086000 | oil sump gasket | 1 |
| 33 | 6353008500024 | oil pan | 1 |
| 34 | 61238021100 | oil screen cpl. | 2 |
| 37 | 0770125015 | O-RING 12,5X1,5 NBR | 2 |
| 38 | 0770170200 | O-RING 17,00X2,00 | 2 |
| 40 | 61338015200 | OIL FILTER | 1 |
| 41 | 07700390261 | O-RING 39,34X2,62 | 1 |
| 42 | 75038041200 | oil filter cover | 1 |
| 43 | 0025050166 | HH collar screw M5x16 TX30 | 2 |
| 44 | 59030023000 | dowel sleeve 6x8x11.5 | 3 |

196353810

53976

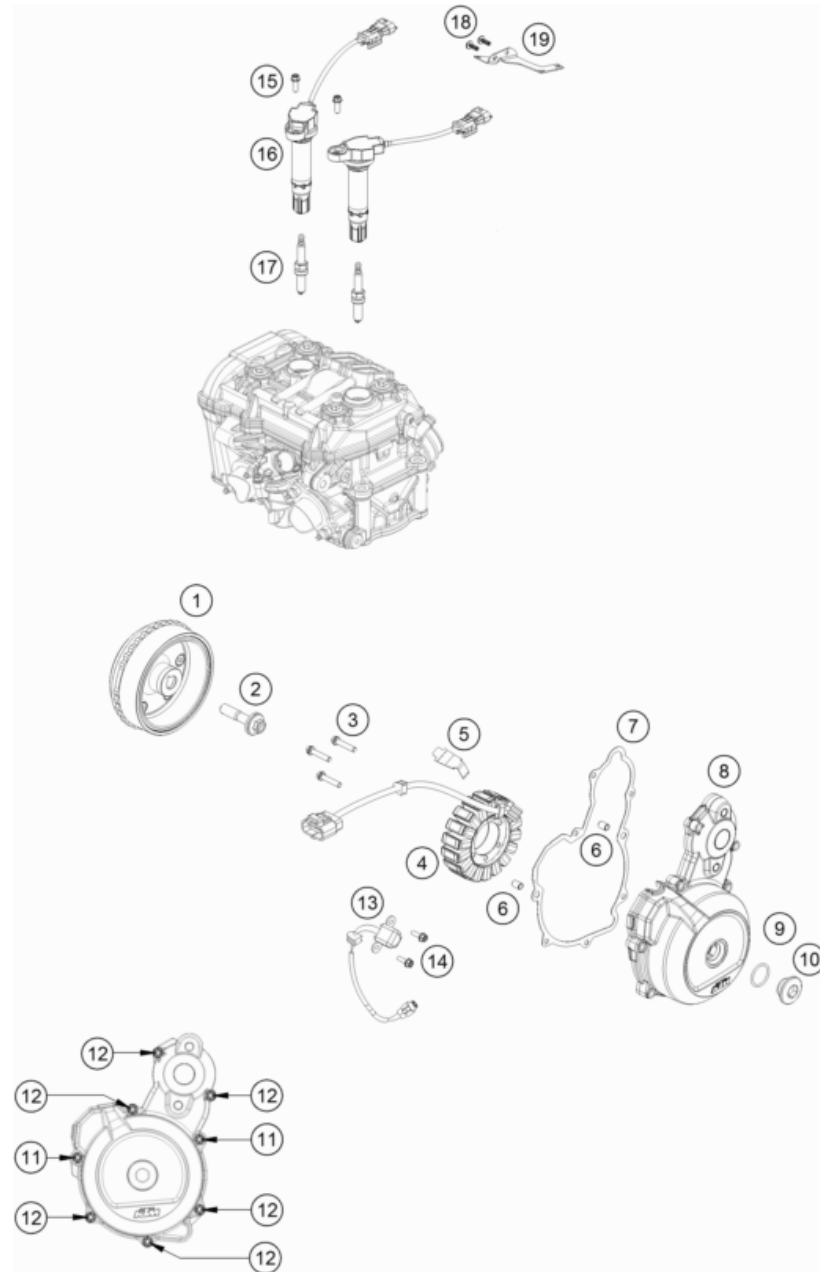
* NEW PART

X ON DEMAND



| POS | PARTNUMBER | PARTNAME | PIECE |
|-----|-------------|-------------------------------|-------|
| 45 | 0025060356 | HH collar screw M6x35 TX30 | 5 |
| 46 | 0025060306 | HH collar screw M6x30 TX30 | 10 |
| 47 | 0770060025 | O-Ring 6x2.5 | 2 |
| 48 | 0025080166S | HH collar screw M8x16 TX40 SL | 1 |
| 49 | 0770070025 | O-Ring 7x2,50 HNBR | 1 |
| 99 | 00050000068 | OILFILTER SERVICE KIT | x |

53976 * NEW PART X ON DEMAND



| POS | PARTNUMBER | PARTNAME | PIECE |
|-----|---------------|--|-------|
| 1 | 63539005000 | rotor cpl. | 1 |
| 2 | 60339003000 | special screw M12x1.5 WS15 | 1 |
| 3 | 0025060306S | HH collar screw M6x30 TX30 | 3 |
| 4 | 63539004000 | stator | 1 |
| 5 | 60039040020 | generator line bracket | 1 |
| 6 | 59030023100 | Dowel, 6x8x11.5 | 2 |
| 7 | 63530040000 | ignition cover gasket | 1 |
| 8 | 6353000200041 | Generator Cover | 1 |
| 9 | 07700240251 | o-ring 24.00x2.50 Viton | 1 |
| 10 | 6003009400030 | threaded plug M24x1.5 PA 6.6 | 1 |
| 11 | 0025060356 | HH collar screw M6x35 TX30 | 2 |
| 12 | 0025060306 | HH collar screw M6x30 TX30 | 6 |
| 13 | 59039034000 | pulse generator KOKUSAN 4K3-A/B | 1 |
| 14 | 0025050166S | HH Collar Screw M5x16 ISA30 SS | 2 |
| 15 | 0025060166 | HH collar screw M6x16 TX30 | 2 |
| 16 | 63539006000 | stick coil | 2 |
| 17 | 77839093000 | spark plug NGK LMAR9AI-10 | 2 |
| 18 | 0081050141 | EJOT PT screw K50x14 | 2 |
| 19 | 64111038000 | Retaining bracket stick coil connector | 1 |

186353910

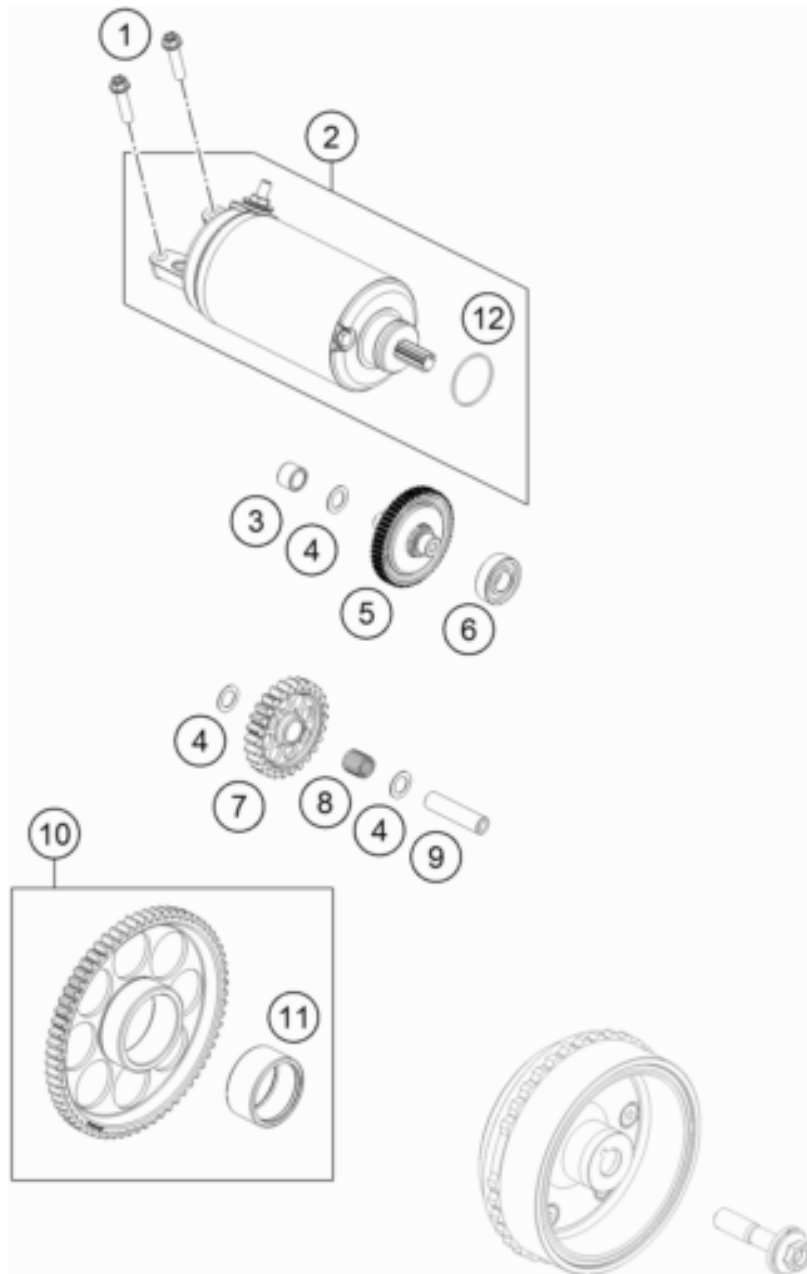
49626

* NEW PART

X ON DEMAND

ELECTRIC STARTER

Engine 890 Duke 2022 2022



| POS | PARTNUMBER | PARTNAME | PIECE |
|-----|-------------|---------------------------------------|-------|
| 1 | 0025060256 | HH collar screw M6x25 TX30 | 2 |
| 2 | 63540001000 | starter | 1 |
| 3 | 0618101410 | needle sleeve HK 1010 10x14x10 | 1 |
| 4 | 60038007010 | washer 10x16x0.5 | 3 |
| 5 | 60340117200 | Torque limiter 10/55 cpl. | 1 |
| 6 | 0625060016 | deep groove ball bearing 6001.2RSR C3 | 1 |
| 7 | 63540022000 | idler gear 26 teeth | 1 |
| 8 | 58440090000 | needle roller and cage K 10x13x13 TN | 1 |
| 9 | 63540029000 | pivot pin | 1 |
| 10 | 63540020000 | free wheel gear cpl. | 1 |
| 11 | 0618354220 | NEEDLE BUSH HK3520 35/42/20 | 1 |
| 12 | 0770244031 | O-Ring 24,40 x 3,10 NBR 70 | 1 |

186354010

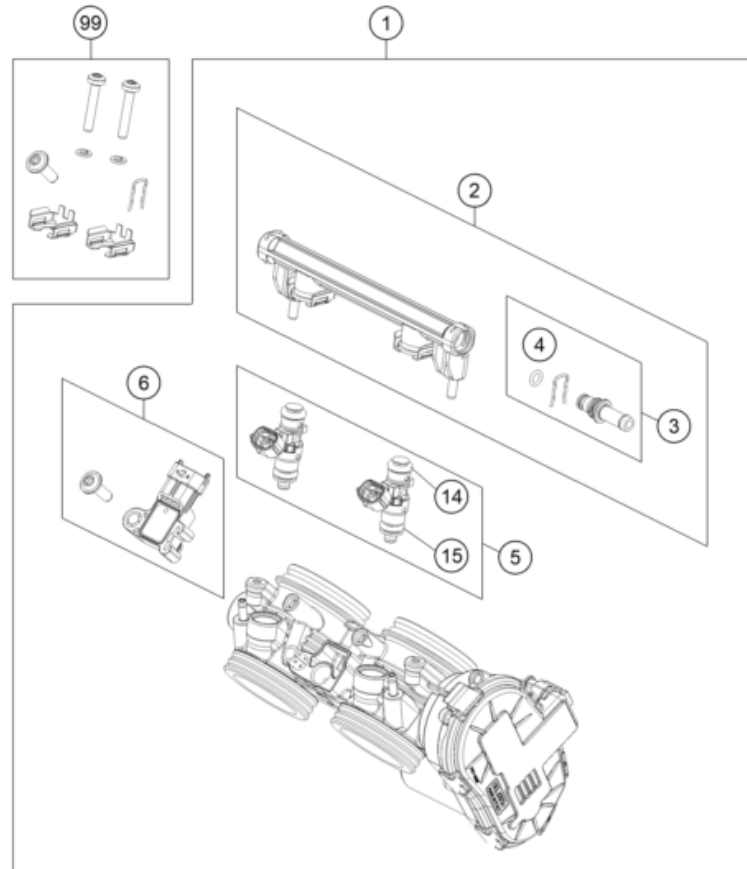
53302

* NEW PART

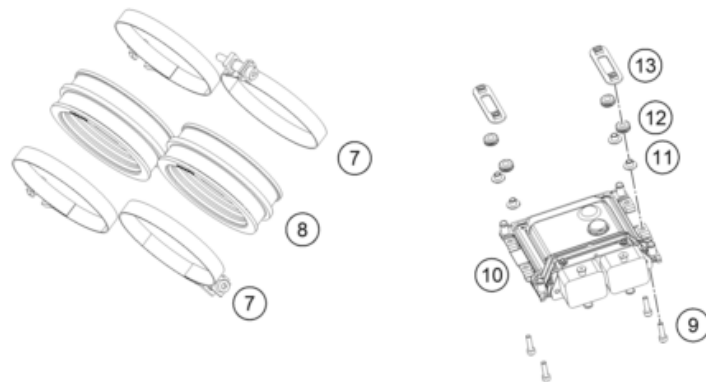
X ON DEMAND

THROTTLE BODY

Engine 890 Duke 2022 2022



| POS | PARTNUMBER | PARTNAME | PIECE |
|-----|-------------|-------------------------------------|-------|
| 1 | 63641001000 | Throttle valve body | 1 |
| 2 | 63541013050 | Fuel pipe | 1 |
| 3 | 63541013044 | Fuel connector cmpl. | 1 |
| 4 | 63541013010 | Square and dust seal | 1 |
| 5 | 63641023044 | Injektor | 1 |
| 6 | 63641085044 | MAP sensor, cmpl. | 1 |
| 7 | 61236048000 | hose clamp Gemi 66 | 4 |
| 8 | 63536044000 | Intake Sleeve | 2 |
| 9 | 0912040163S | AH screw DIN0912 M4x16 self-locking | 4 |
| 10 | 63541031100 | EFI control unit | 1 |
| 11 | 64141030010 | Collar Bushing 4.5x6x12x6.3 | 4 |
| 12 | 64141030000 | Rubber grommet control unit | 4 |
| 13 | 64141029000 | Mounting Bracket ECU cpl. | 2 |
| 14 | 55641023020 | O-ring | 2 |
| 15 | 55641023010 | O-ring | 2 |
| 99 | 63641099000 | Smallpart kit | 1 |



206364110

53986

* NEW PART

X ON DEMAND

A large, empty rectangular box with a thin black border, occupying the majority of the page. It is intended for the user to write their notes.

A large, empty rectangular box with a thin black border, occupying most of the page. It is intended for the user to write their notes.

A large, empty rectangular box with a thin black border, occupying the majority of the page. It is intended for the user to write their notes.

KTM.COM



088720VEN

KTM Sportmotorcycle GmbH
5230 Mattighofen, Austria
www.ktm.com

KTM POWERPARTS

KTM POWERWEAR

KTM ORIGINAL SPARE PARTS



Art. Nr.: 088720VEN 3. Dez. 2021